



City of Denton, Texas

FY 2019-20 Denton Energy Center YTD November 2019 Dashboard

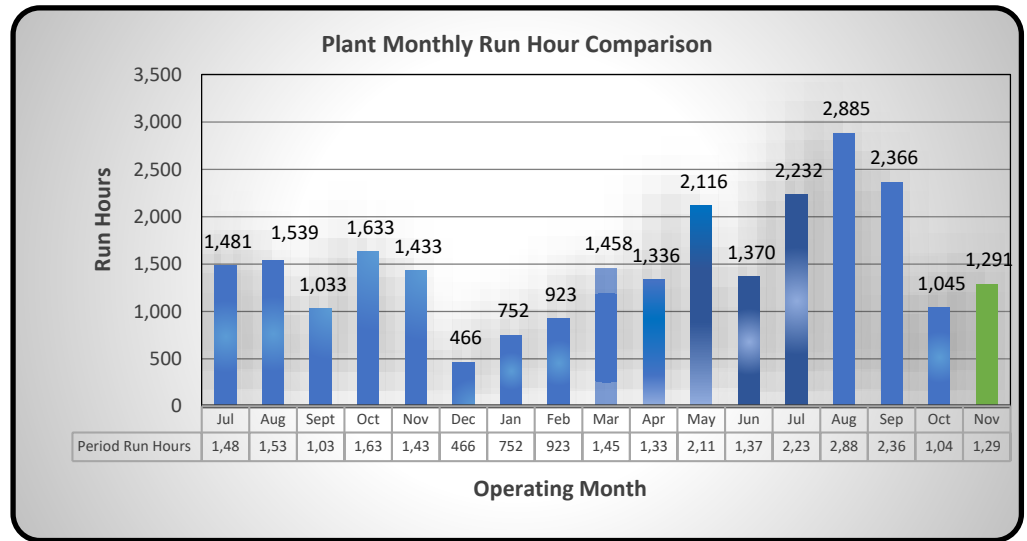
Emissions														
Description	November 2019					Description	Nitrogen Oxides (NOx)	Carbon Monoxide (CO)	Volatile Organic Compound (VOC)	Particulate Matter<10 microns (PM ₁₀)	Particulate Matter<2.5 microns (PM _{2.5})	Sulphur Dioxide (SO ₂)	Ammonia (NH ₃)	Carbon Dioxide Equivalents (CO _{2e})
	Engine Runtime (hours)	Hot Starts	Warm Starts	Cold Starts	Stops									
Engines (1-12)	1,291	453	66	185	704	DEC Monthly Emissions Total (tons)	2.10	2.17	2.03	1.19	1.19	0.03	0.19	7,906.00
						DEC Annual Permit Limit Operations (tons)*	29.78	93.52	48.16	69.72	69.72	1.45	60.90	
						Monthly Plant Emissions per DEC Permit Limit	7.05%	2.32%	4.22%	1.70%	1.70%	1.73%	0.31%	
						Annual to Date Plant Emissions per DEC Permit Limit	60.70%	18.60%	30.70%	16.80%	16.80%	14.80%	4.20%	

*Operations Annual Limit accounts for Balance of Plant standard emissions

Generation & Gross Revenues			
Month	Revenue (In Millions)	MWh	\$/MWh
Oct-19	\$2.04	16,344	\$125.04
Nov-19	\$1.15	16,168	\$71.27
Total FY 19-20	\$3.20	32,512	\$98.30

	FY 2018-19	FY 2019-20	FY 2019-20	FY 2019-20
	ACTUALS	BUDGET	YTD	PROJECTION
DEC REVENUE*	\$ 37.48	\$ 25.07	\$ 3.20	\$ 25.07
EXPENDITURE SUMMARY				
Energy Expense - Fuel	\$ 6.95	\$ 12.48	\$ 0.81	\$ 12.48
Personal Services	1.67	2.22	0.29	2.22
Materials & Supplies	0.16	0.44	0.01	0.44
Maintenance & Repair	0.11	0.56	-	0.56
Insurance ⁽¹⁾	0.49	0.50	-	0.50
Miscellaneous	-	-	-	-
Operations	0.21	0.48	0.04	0.48
Debt Service - Principal	5.97	-	1.20	-
Debt Service - Interest	7.58	-	1.68	-
Interfund Transfers	0.12	0.05	0.01	0.05
Transfer to Capital Projects	-	-	-	-
DEC EXPENDITURES	\$ 23.26	\$ 16.73	\$ 4.04	\$ 16.73
CAPITAL CHARGE BACK	\$ -	\$ -	\$ -	\$ -
DEC NET INCOME	\$ 14.22	\$ 8.34	\$ (0.84)	\$ 8.34

*Preliminary, Unaudited Figures



Key Trends

The DEC Gross Margin as of November 30 was \$2.4 Million which is \$2.0 Million higher than budgeted. (Gross Margin = DEC Revenue – Fuel Cost – Variable Operating & Maintenance Cost).

At this point in the fiscal year, FY 2019-20 year-end projections are equal to the FY 2019-20 budget.

Note: All dollar figures presented are in millions of dollars.