

Site Accessibility Evaluation



Sequoia Park
1404 E University Dr
Denton, TX 76209

Accessibility Evaluation

Inspection Date: 04/12/2021
Inspector: N/A

Prepared By



(972) 434 - 0068

www.accessology.com

Table of Contents

Barriers 3

Sequoia Park 3

Path of Travel 3

Cost Summary 9

Sequoia Park: Path of Travel

Barrier: 1

There is no accessible route of travel from the public way.

Citation:

2010 ADAS Section: 206.2.1

1991 ADAAG Section:
4.1.2(1)

Current Condition:

There is no accessible route
of travel from the public
way.

Budget Cost:

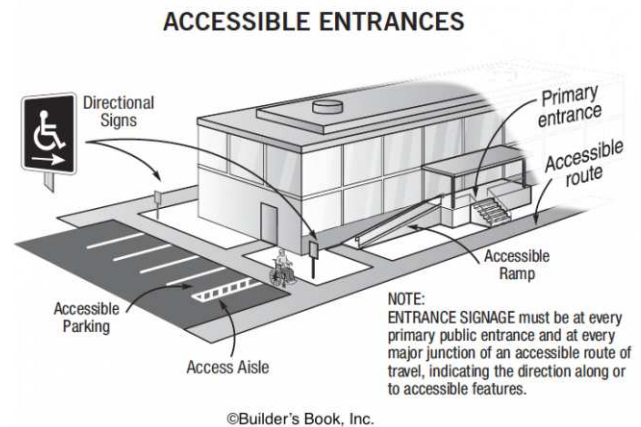
Base Cost: \$3,500.00
Contingency Cost: \$700.00
Design Cost: \$525.00
Total Cost: \$4,725.00

Possible Solutions:

Provide an accessible route to the park and trail.

Barrier Priority:

Level 4 (High): Parking and exterior accessible routes (DOJ Level 1) – moderately out of compliance



Barrier #1 Additional Barrier Photos



Sequoia Park: Path of Travel

Barrier: 2

The treads are not the minimum required depth.

Citation:

2010 ADAS Section: 504.2

1991 ADAAG Section: 4.9.2

Current Condition:

The treads are not the minimum required depth.

Budget Cost:

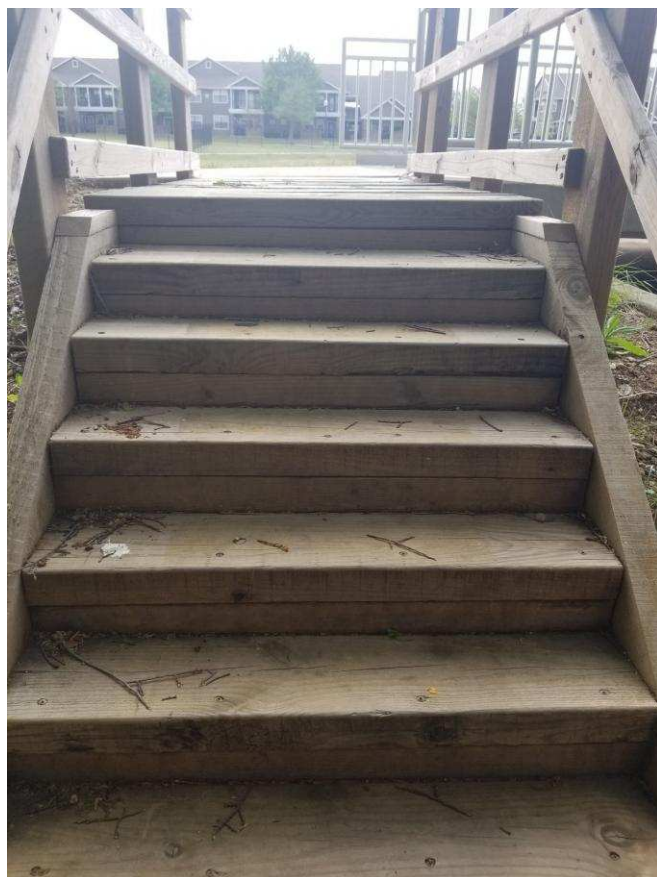
Base Cost: \$3,500.00
Contingency Cost: \$700.00
Design Cost: \$525.00
Total Cost: \$4,725.00

Possible Solutions:

Modify stairs to provide treads no less than 11 inches deep, measured from riser to riser.

Barrier Priority:

Level 4 (High): Parking and exterior accessible routes (DOJ Level 1) – moderately out of compliance



Barrier #2 Additional Barrier Photos



Sequoia Park: Path of Travel

Barrier: 3

The walkway contains abrupt vertical edges and/or variations over 1/4 inch.

Citation:

2010 ADAS Section: 303.3,
303.2

1991 ADAAG Section: 4.5.2

Current Condition:

The walkway contains
abrupt vertical edges and/or
variations over 1/4 inch.

Budget Cost:

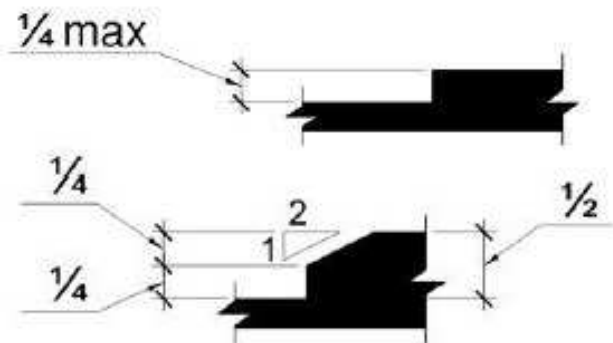
Base Cost: \$1,500.00
Contingency Cost: \$300.00
Design Cost: \$225.00
Total Cost: \$2,025.00

Possible Solutions:

Modify the walkway from the stairs to the trail to provide a smooth level surface.

Barrier Priority:

Level 6 (Medium): Parking or exterior accessible routes (DOJ Level 1) – minimally out of compliance
Access to goods and services (DOJ Level 2) – moderately out of compliance
Restrooms (DOJ Level 3) – severely out of compliance



Barrier #3 Additional Barrier Photos



Cost Summary

Item	# of Barriers	Total Item Cost
High Priority	2	\$9,450.00
Level 1	0	\$0.00
Level 2	0	\$0.00
Level 3	0	\$0.00
Level 4	2	\$9,450.00
Medium Priority	1	\$2,025.00
Level 5	0	\$0.00
Level 6	1	\$2,025.00
Level 7	0	\$0.00
Level 8	0	\$0.00
Low Priority	0	\$0.00
Level 9	0	\$0.00
Level 10	0	\$0.00
Level 11	0	\$0.00
Level 12	0	\$0.00
Priority Total	3	\$11,475.00